
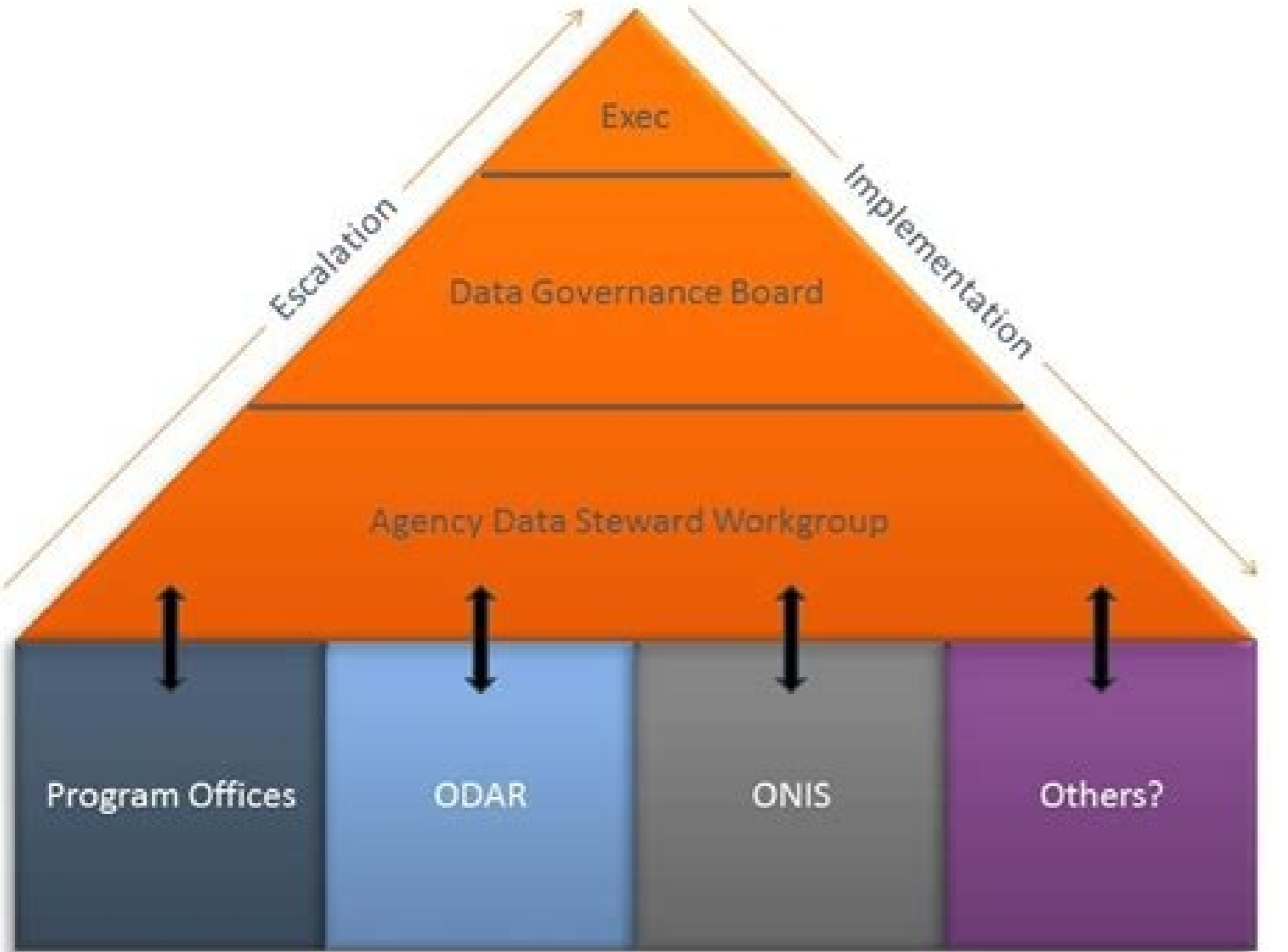
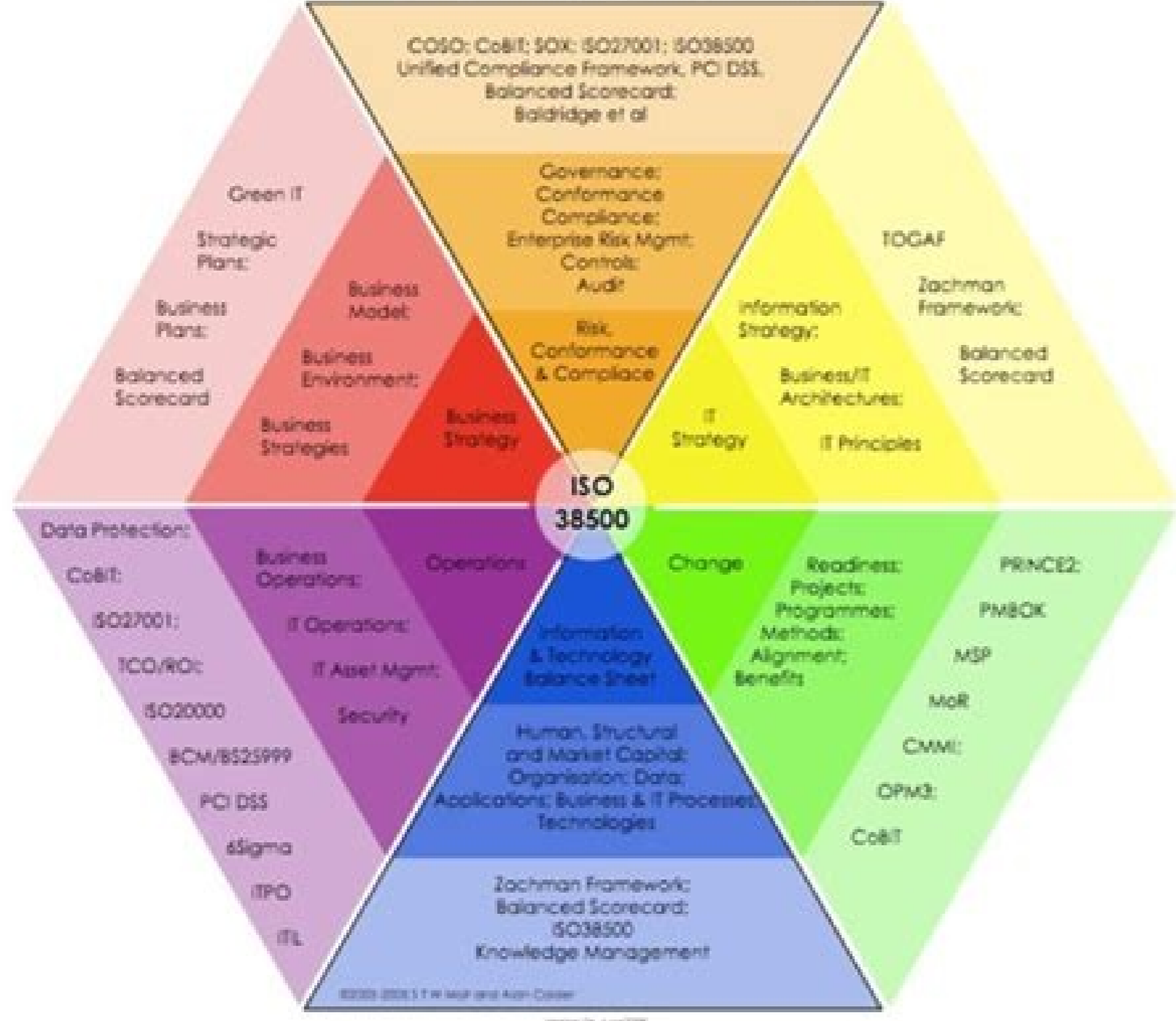


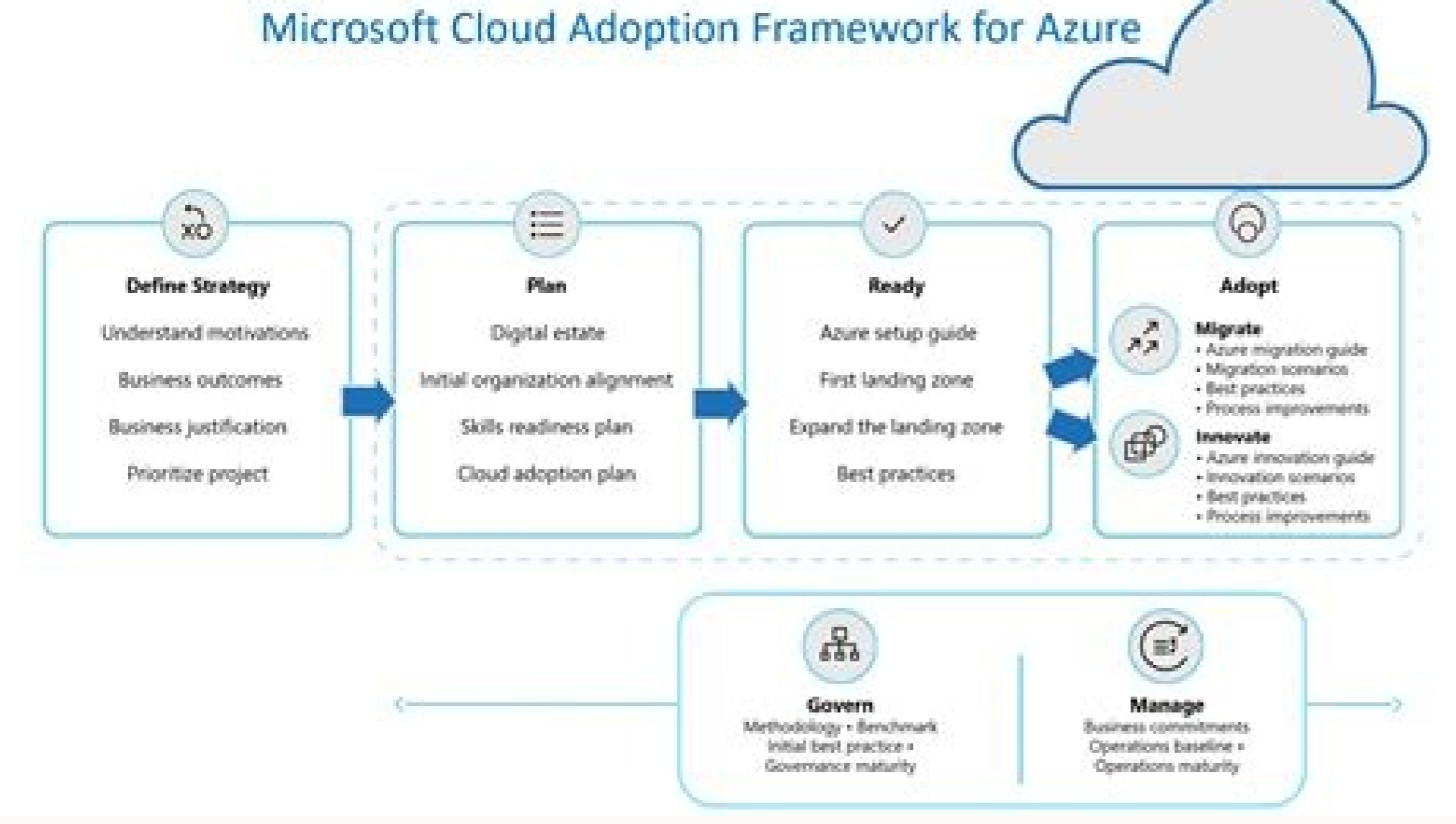
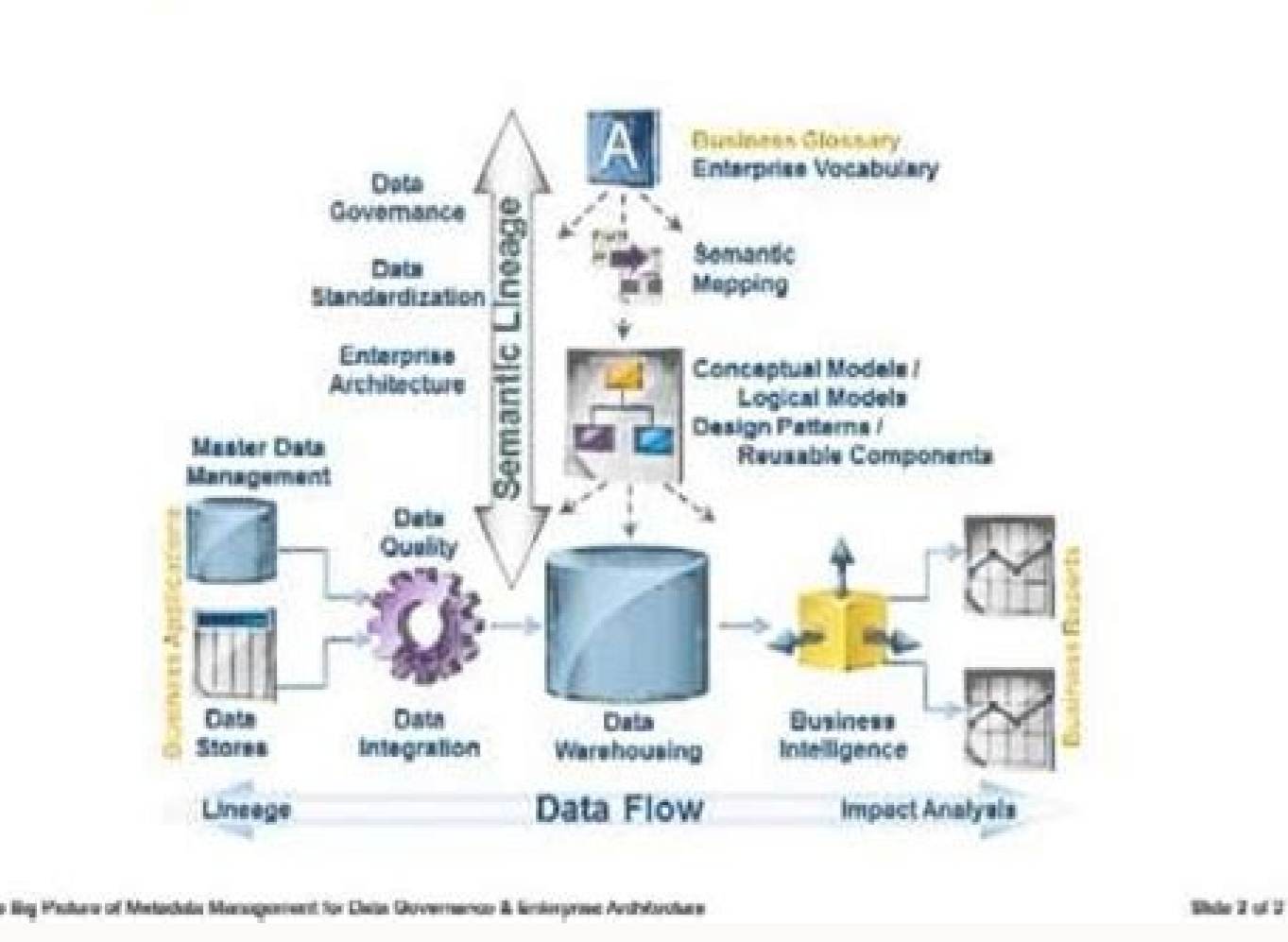
I'm not robot  reCAPTCHA

Continue

The IT Governance Framework



The Big Picture



Key differences and implications for data management can be found in three key building blocks of Accenture's Data Management Framework. Data management disciplines: Key log data associates.

Discipline	Key Log Data Associates	Key Log Data Associates	Key Log Data Associates	Key Log Data Associates	Key Log Data Associates	Key Log Data Associates
Security	Access control	Encryption	Logging	Monitoring	Retention	Deletion
Availability	Redundancy	Disaster recovery	Business continuity	High availability	Performance	Scalability
Integrity	Consistency	Accuracy	Completeness	Timeliness	Validity	Reliability

